

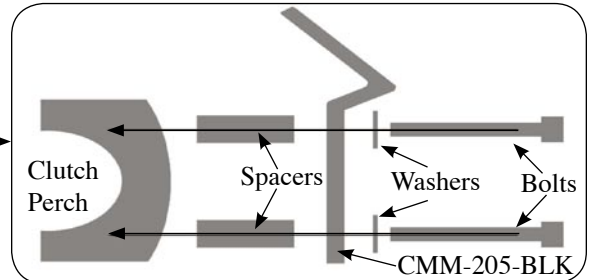
INSTALLATION INSTRUCTIONS

CUSTOM MOTORCYCLE MOUNT Honda Goldwing Left hand Edition

This Custom Motorcycle Mount is designed to attach a number of portable electronic devices to the clutch perch of Honda Goldwing 1800 Motorcycles.

Included Hardware List

1. One (1) CMM-205-BLK Powder Coated Bracket
2. Two (2) 5/8" Black Alloy Spacers
3. Two (2) 1/4" Black Washers
4. Two (2) M6x1.0x40 Black Hex Head Bolts
5. One (1) 5mm" Hex Key



Step 1.

Begin installation by removing the cap plug from the front of the 5 mm screws. Continue by removing two 5mm screws from the left clutch assembly. Set these screws aside in a safe place. Locate the two provided spacers and insert them in the existing screw holes.

Note: Be sure not to lose any of the screws or let any of the parts fall loose from the motorcycle handlebar.



Step 2.

Place the CMM-205-BLK over the spacers and align the hole pattern. Locate one of the provided M6 hex head screw and one flat washer. Affix them together and insert into the top hole first. Continue by doing the same on the bottom hole. Tighten both hex head screws.

Enjoy your new Custom Motorcycle Mount.



Step 3.

Install any **Mobile Device** or **Amps** compatible device to your **Custom Motorcycle Mount**.

Your installation is complete.



© Bracketron Inc, 2006 All rights reserved.

The information in this document is subject to change without notice. Bracketron Inc. assumes no responsibility for any errors that may appear in this document nor do we assume any liability in connection with its use. This supersedes and voids all previous literature. Please contact the sales department for additional information.

Bracketron Inc will not be responsible or liable for damage to vehicles in the installation and or removal of this Bracketron Inc mount.

Bracketron Inc will not be liable for personal injuries or damage to property resulting from a motor vehicle accident and or improper installation of this Bracketron Inc mount.

Bracketron Inc. 9607 Humboldt Ave S Bloomington, MN 55431
Ph: 952-746-7775 Fax: 1-800-660-1784 Toll Free: 1-866-237-4443

Web Address: www.bracketron.com