

# INSTALLATION MANUAL FOR

NISSAN - FRONTIER - 2002-2004

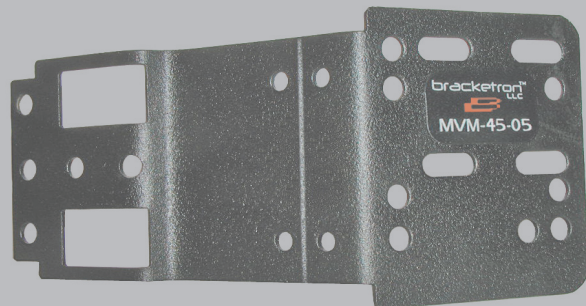
NISSAN - XTERRA 2002-2004

**Mount Location:** To the right of the radio

## MVM Multi Vehicle Mount

**MVM-45-05**

Includes PHS-203 Ultra Slim Swivel



Thank you for purchasing your new Bracketron **MVM** Multi Vehicle Mount.

The Multi Vehicle Mount is an (end user-installer) modifiable professional mounting bracket for most all mobile electronics requiring a steady and secure installation in a motor vehicle. The MVM installs behind your vehicles dash panel using existing or non-visible holes and is designed to cleanly protrude out from your vehicle's dash panel.

Before installing, you must take the time to read and understand this installation manual and read all the warnings accompanying this product.

**Instructions Include:** tools needed for install, directions for dash panel removal, directions for modifying the MVM if required.

You can download this manual and any updates from  
<http://www.bracketron.com/downloads>

## IMPORTANT INFORMATION

### IMPORTANT INFORMATION

Please read instructions completely before installing this Bracketron MVM Mount. All instructions are written from the drivers seat vantage point looking forward at the vehicles dash. We advise caution whenever you are removing or handling plastic parts of a vehicles dash. **WARNING:** Unnecessary force or pressure can cause pieces to crack or break.

**PARTS INCLUDED:** MVM-45-05 Mount, 3 - #8x3/4" Self Tapping Screws, 2 - M4x8 Phillips Pan Head Screws, 2 - M4 Nylon Stop Nuts, PHS-203 Ultra Slim Swivel and Mounting Hardware.

### TOOLS NEEDED FOR DASH PANEL DISASSEMBLY

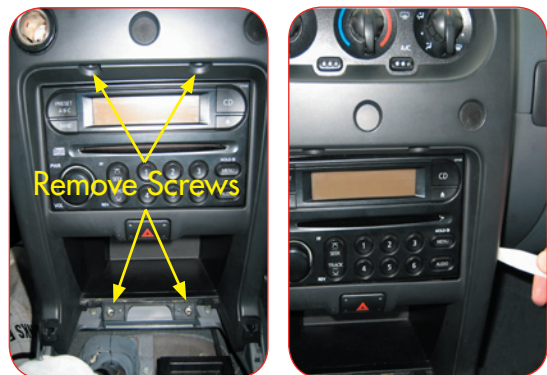
Dash Trim Tool (Part #SIT-104)  
# 2 Phillips Screwdriver  
Fiskars 8511 Craft Hand Drill (recommended)  
5/64" Drill Bit  
9/32" Open End Wrench (for swivel)  
Marking Pen

### TOOLS NEEDED FOR MVM MODIFICATION (if required)

4 inch Mounted Bench Vise  
12 oz. Ball Pein Hammer  
Standard Tin Snips  
Standard Hacksaw  
Small File

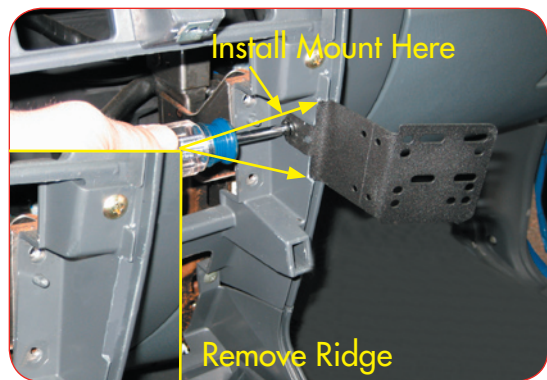
**Note:** The hole pattern on the face of the MVM maybe different then what is shown in the pictures.

## DASH DISASSEMBLY INSTRUCTION



- Using a Dash Trim tool (part #SIT-104) carefully pry up on the bezel that surrounds the shifter. Releasing a total of ten (10) clips, two (2) in front of the cup holders, three (3) on each side, and two (2) in the front of the bezel. After clips are released just pull bezel back far enough to gain access to the two (2) phillips screws. Remove the screws and set them aside.

- Locate and remove two (2) phillips screws just above the radio. Set these screws aside. Insert the Dash Trim tool (part #SIT-104) in the lower right corner of the bezel and carefully pull out towards you to release the lower right clip. work the bezel loose all the way around until all the clips are loose. Disconnect all wiring to the bezel and set it aside. Locate and remove the four (4) screws that hold the radio in place. slide the radio out and disconnect all the wiring to it. set the radio aside.



- Skip to **Step 7** on the following page if you have not yet formed the bracket to fit your vehicle.

- Locate a small ridge of plastic just to the right of the radio. Place the MVM in the location as shown in the picture to the left. Use a marking pen and mark a spot on the top and bottom of the MVM on the plastic ridge. Set the MVM aside. Using a utility knife, remove the thin plastic between your marks. **Note:** Use extreme caution when removing the plastic ridge as to not damage the dash molding.



- Place MVM in the trimmed out area and with a marking pen, mark the location of the mounting hole. Carefully drill one (1) hole with a 5/64" drill bit and hand drill. Place the MVM over the pilot hole, insert the provided screws and tighten the mount down.

- Carefully reinstall the dash in reverse order securing all screws and clips to the bezel. Install the included Ultra Slim Swivel #PHS-203 to your Multi Vehicle Mount or any other AMPs compatible device.

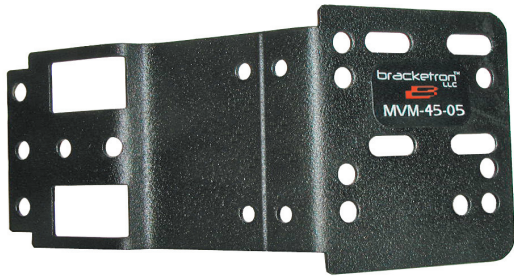
Your installation is complete

# MVM MODIFICATION INSTRUCTIONS

## PLEASE NOTE

The Bracketron MVM-45-05 mount is a modifiable mounting bracket. The illustrations on the left show how this mount should look during and after the modification steps in order to fit the listed vehicles on the front page of this manual. **Many vehicle applications may not require any modifications to the mount. If this is the case it will be noted below and there will be no steps to follow on this page.**

**Picture 1**

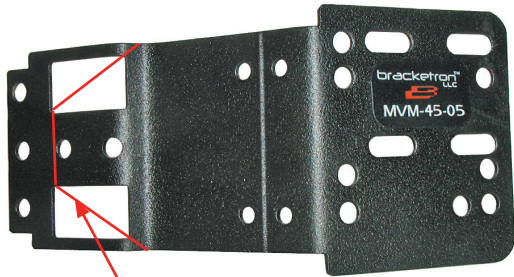


**7** Before you begin to form your MVM, please make sure it looks exactly the way it does in the top picture to the left.

**8** To begin, use a marking pen to draw line on the MVM as depicted in red in the middle picture to the left. **Note:** See red lines in the middle picture for guidance. Use tin snips to cut along this line.

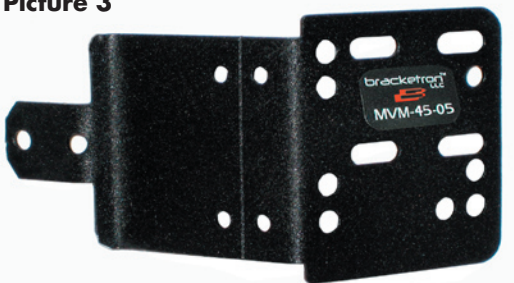
Now go back to **step 4** on the previous page to finish installation

**Picture 2**



**Cut Mount Here**

**Picture 3**



**Note:** The hole pattern on the face of the MVM maybe different then what is shown in the pictures.

**Note:** Please see page 3 in this manual for PHS-203 Ultra Slim Swivel Instructions.

# PHS-203 ULTRA SLIM SWIVEL INSTRUCTIONS

## PLEASE READ INSTRUCTIONS COMPLETELY BEFORE INSTALLING THIS BRACKETRON MOBILE SOLUTION.

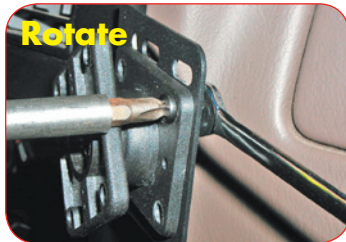
This Professional Swivel Mount Solution is designed to be mounted to your MVM or any other 4 hole AMPs compatible mounting device. The Ultra Slim Swivel is compact with a low profile and is designed to provide adjustability to devices such as Satellite Radio Receivers, GPS monitors or Mobile Phones. The Ultra Slim Swivel angles your device for better viewing, tilting approx 15° in all directions and swivels 360° degrees for maximum adjustability. All mounting hardware is included in the kit along with our AMPs adapter plate to attach devices that support T- Notch mounting.

### PARTS INCLUDED

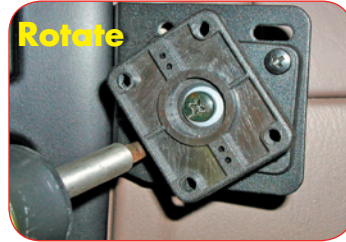
- 1 - Ultra Slim Swivel
- 1 - AMPs Adapter Plate
- 4 - M4 x 10 Hex Head Screws
- 4 - M4 x 10 Pan Head Screws
- 4 - M4 x 12 Pan Head Screws
- 4 - M4 Hex Head Nuts
- 4 - M4 Nylon Locking Nuts
- 4 - M4 Star Washers

- 1** **Note: The swivel can be installed before or after the mount is installed in the vehicle.** Attach the Ultra Slim Swivel to any MVM or CBM Mount or other AMPs mounting device by inserting the M4x10 Pan Head screws through the holes on the back half of the swivel. Align the screws up with the holes on the mount. Attach the M4 Nylon Locking Nuts only finger tight. Rotate the front half of the swivel to gain access to the M4x10 Pan Head screws. (See Picture 1&2) Tighten all 4 screws with a #2 Phillips screwdriver and 9/32" open end wrench.

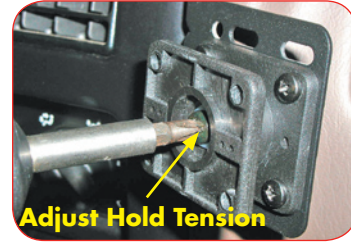
Picture 1



Picture 2

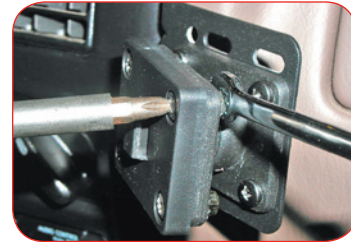


Picture 3



- 2** Tighten the center screw to adjust the desired tension of the swivel. (See Picture 3) **Note:** If Swivel becomes loose over time, you can grasp the swivel and pull toward you lightly while rotating it clockwise. This will tighten the swivel allowing you to create the desired tension needed.

Picture 4



### For T- Notch Devices

Attach the AMPs T- Notch Adapter to the front half of the swivel using the M4x12 Pan Head screws. Attach the M4 Star Washers and M4 Hex Nuts to the screws and tighten the plate down with the #2 screwdriver and 9/32" open end wrench. Slide your device onto the T- notch Adapter plate to secure it to the swivel. (See Pictures 4)

- 3**

### For AMPs Devices with Inserts

Attach your AMPs device using the M4x10 Hex Head screws and M4 Star Washers. Align the holes on the device with the holes on the front half of the swivel. Slide the Star Washers onto the Hex Head screws. Insert the screws through the swivel and into your device only finger tight. Tighten down the device with the 9/32" open end wrench. Your device is now secure to the swivel. (See Pictures 5)

Picture 5

