

INSTALLATION MANUAL FOR

HONDA - ODYSSEY - 2005-2010

Mount Location: Above Radio

MVM Multi Vehicle Mount

MVM-15-05

Includes PHS-203 Ultra Slim Swivel



Thank you for purchasing your new Bracketron **MVM** Multi Vehicle Mount.

The Multi Vehicle Mount is an (end user-installer) modifiable professional mounting bracket for most all mobile electronics requiring a steady and secure installation in a motor vehicle. The MVM installs behind your vehicles dash panel using existing or non-visible holes and is designed to cleanly protrude out from your vehicle's dash panel.

Before installing, you must take the time to read and understand this installation manual and read all the warnings accompanying this product.

Instructions Include: tools needed for install, directions for dash panel removal, directions for modifying the MVM if required.

You can download this manual and any updates from
<http://www.bracketron.com/downloads>

IMPORTANT INFORMATION

IMPORTANT INFORMATION

Please read instructions completely before installing this Bracketron MVM Mount. All instructions are written from the drivers seat vantage point looking forward at the vehicles dash. We advise caution whenever you are removing or handling plastic parts of a vehicles dash. **WARNING:** Unnecessary force or pressure can cause pieces to crack or break.

PARTS INCLUDED: MVM-15-05 Mount, 3- #8x3/4" Self Tapping Screws PHS-203 Ultra Slim Swivel, and Hardware

TOOLS NEEDED FOR DASH PANEL DISASSEMBLY

Dash Trim Tool (Part #SIT-104)
 # 2 Phillips Screwdriver
 Fiskars 8511 Craft Hand Drill (recommended)
 5/64" Drill Bit
 9/32" Open End Wrench (for swivel)
 Marking Pen

TOOLS NEEDED FOR MVM MODIFICATION *(if required)*

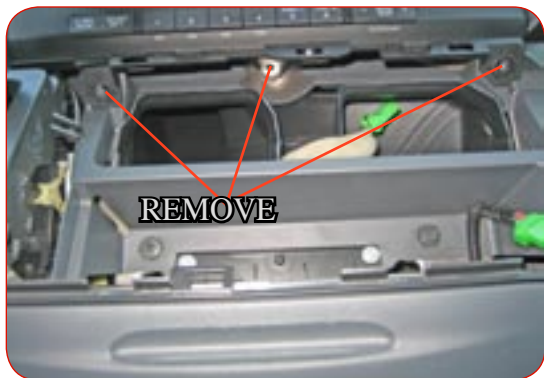
4 inch Mounted Bench Vise
 12 oz. Ball Pein Hammer
 Standard Tin Snips
 Small File

Note: The hole pattern on the face of the MVM maybe different then what is shown in the pictures.

DASH DISASSEMBLY INSTRUCTION



1 With a dash trim removal tool pry up on the shifter bezel and remove it. Remove all wire harnesses.



2 Remove (3) three 10mm bolts from underneath radio. Remove radio.

3 Skip to **Step 5** on the following page if you have not yet formed the bracket to fit your vehicle.

4 Attach the mount to the dash as shown with the supplied hardware.



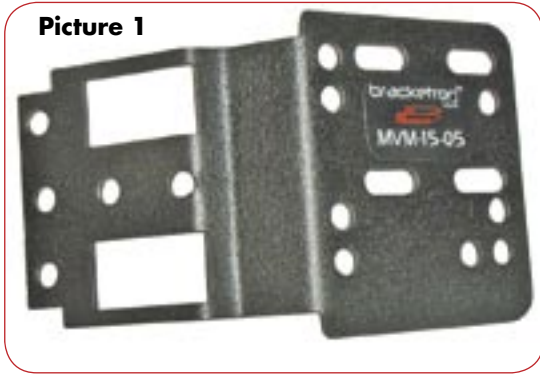
5 Carefully reinstall the dash in reverse order securing all screws and clips to the bezel. Install the included Ultra Slim Swivel #PHS-203 to your Multi Vehicle Mount or any other AMPs compatible device.

Your installation is complete

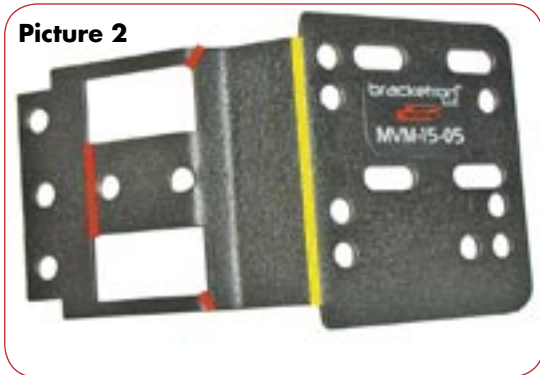
MVM MODIFICATION INSTRUCTIONS

PLEASE NOTE

The Bracketron MVM-15-05 mount is a modifiable mounting bracket. The illustrations on the left show how this mount should look during and after the modification steps in order to fit the listed vehicles on the front page of this manual. *Many vehicle applications may not require any modifications to the mount. If this is the case it will be noted below and there will be no steps to follow on this page.*



6 Position the MVM as shown in Picture 1



7 Cut the MVM on the RED LINES in Picture 2 and bend on the YELLOW LINE in relation to the finished product in Picture 3

Go back to Step 4 to complete your installation.



Note: The hole pattern on the face of the MVM maybe different then what is shown in the pictures.

Note: Please see page 3 in this manual for PHS-203 Ultra Slim Swivel Instructions.

PHS-203 ULTRA SLIM SWIVEL INSTRUCTIONS

PLEASE READ INSTRUCTIONS COMPLETELY BEFORE INSTALLING THIS BRACKETRON MOBILE SOLUTION.

This Professional Swivel Mount Solution is designed to be mounted to your MVM or any other 4 hole AMPs compatible mounting device. The Ultra Slim Swivel is compact with a low profile and is designed to provide adjustability to devices such as Satellite Radio Receivers, GPS monitors or Mobile Phones. The Ultra Slim Swivel angles your device for better viewing, tilting approx 15° in all directions and swivels 360° degrees for maximum adjustability. All mounting hardware is included in the kit along with our AMPs adapter plate to attach devices that support T- Notch mounting.

PARTS INCLUDED

- 1 - Ultra Slim Swivel
- 1 - AMPs Adapter Plate
- 4 - M4 x 10 Hex Head Screws
- 4 - M4 x 10 Pan Head Screws
- 4 - M4 x 12 Pan Head Screws
- 4 - M4 Hex Head Nuts
- 4 - M4 Nylon Locking Nuts
- 4 - M4 Star Washers

- 1** **Note: The swivel can be installed before or after the mount is installed in the vehicle.** Attach the Ultra Slim Swivel to any MVM or CBM Mount or other AMPs mounting device by inserting the M4x10 Pan Head screws through the holes on the back half of the swivel. Align the screws up with the holes on the mount. Attach the M4 Nylon Locking Nuts only finger tight. Rotate the front half of the swivel to gain access to the M4x10 Pan Head screws. (See Picture 1&2) Tighten all 4 screws with a #2 Phillips screwdriver and 9/32" open end wrench.

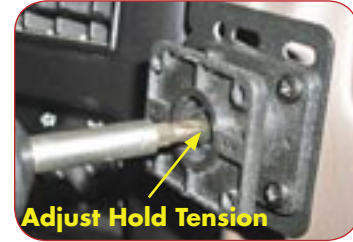
Picture 1



Picture 2



Picture 3



- 2** Tighten the center screw to adjust the desired tension of the swivel. (See Picture 3) **Note:** If Swivel becomes loose over time, you can grasp the swivel and pull toward you lightly while rotating it clockwise. This will tighten the swivel allowing you to create the desired tension needed.

For T- Notch Devices

Attach the AMPs T- Notch Adapter to the front half of the swivel using the M4x12 Pan Head screws. Attach the M4 Star Washers and M4 Hex Nuts to the screws and tighten the plate down with the #2 screwdriver and 9/32" open end wrench. Slide your device onto the T- notch Adapter plate to secure it to the swivel. (See Pictures 4)

- 3**

For AMPs Devices with Inserts

Attach your AMPs device using the M4x10 Hex Head screws and M4 Star Washers. Align the holes on the device with the holes on the front half of the swivel. Slide the Star Washers onto the Hex Head screws. Insert the screws through the swivel and into your device only finger tight. Tighten down the device with the 9/32" open end wrench. Your device is now secure to the swivel. (See Pictures 5)

Picture 4



Picture 5

